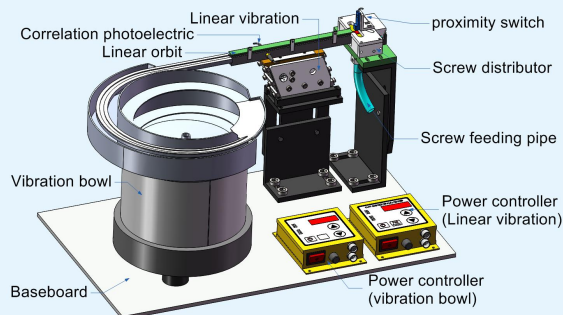


# ENC Screw feeder (Vibration bowl type)

Customized base on your screw and requirement = Perfect performance in your work



## Reference image:



## Application:



## Features:

- 1) This screw feeder is customized according to your screw and related requirement.
- 2) The vibration bowl, linear vibration and screw distributor have been Integrated together, You should not purchase every part from different supplier and install them together, So it can save much time for your assembly.
- 3) Equipped with the original CUH power controller, It can steady the voltage automatically. What's more, It owns the correlation photoelectric switch, When it detects the linear orbit is full of screw, The controller will stop outputting voltage after the setting delay time; When it detects the linear orbit is empty, Then the controller will start to output voltage right now.
- 4) The screw distributor can feed screw stably, rarely sticking.
- 5) We can customize the vibration bowl with PU coating for reducing the abrasion to your screw when the bowl is working.
- 6) If required, We can match a soundproof cover to reduce the noise pollution.

## Optional accessories:

Placing Table	Soundproof cover	Automatic screw supplying machine
More colors optional.  	 <b>NOTE:</b> Built in soundproof cotton.	

## Technical matters to be confirmed before ordering:

- ① Your required screw capacity;
- ② Available space prepared for our screw feeder (Length x Width x Height);
- ③ Requirement of screw appearance protection;
- ④ Exit quantity, Interval between two exits, Exit height;
- ⑤ Screw size;
- ⑥ Requirement of sound insulation;

## Specifications:

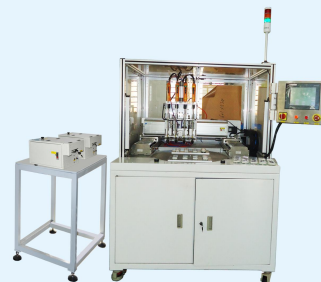
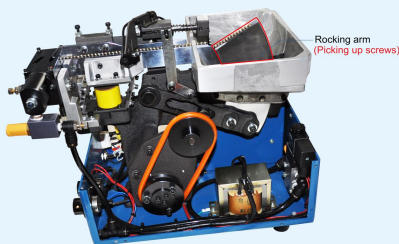
Item/Model	SF-200V	SF-300V	SF-400V	SF-500V	SF-600V	SF-DV series
Capacity of screw (Pcs)	2000~2500	2000~3000	2000~4000	2000~4500	2000~5000	≥10000
Feeding speed (Pcs/Min.)	55~60	45~60	35~50	30~45	30~40	20~30
Power supply	100~260ACV, 50/60Hz					
Dimension (Bowl dia. x H, mm)	200x300	300x320	400x360	500x420	600x500	Customization
Head diameter Max. (mm)	5	7	9	13	20	40
Total length Max. (mm)	8	10	20	30	50	70
Quantity of exit	1~12 (Design base on your actual requirement)					
Net weight (Kg)	18	22	24	26	35	Customization
Optional accessories	Placing table, Soundproof cover, Automatic screw supply machine					

# ENC Screw feeder (Rocking arm type)

Customized base on your screw and requirement = Perfect performance in your work



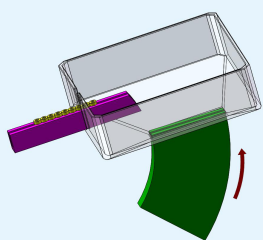
## Reference images:



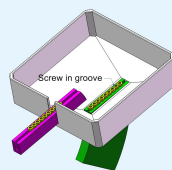
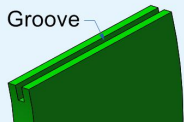
## Application:

## Screw hopper introduction:

### Bottom position

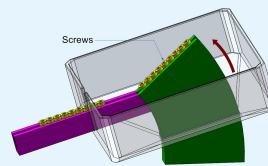


Groove



**NOTE:**The green part is the arm for screw picking up. When it stays at the bottom position, Some screw will drop into the groove.

### Top position



**NOTE:**When the arm moves to the top position as the direction of red arrow, The screw will slip into the linear orbit.

## Features:

- 1) Customized according to your actual requirement and screw size.
- 2) Compared with the vibration bowl type screw feeder, The noise it makes will be very less, So it can supply you a very quiet and comfortable working condition.
- 3) The special design of the structure makes feeding fast and stable.
- 4) Huge hopper can take a lot of screw, Reduce the times of placing screws much.
- 5) The screw feeding can be adjusted freely according to your requirement.
- 6) This machine is suitable for the screws with washer or spring washer.
- 7) Small overall dimension, occupying little space, and easy to move.
- 8) One set screw feeder can feed screw for two tightening spindles of automation equipment.

## Optional accessories:

More colors optional.



## Technical matters to be confirmed before ordering:

- ① Your required capacity;
- ② Available space prepared for our screw feeder (Length x Width x Height);
- ③ Screw size;

## Specifications:

Item/Model	SF-200A	SF-300A	SF-400A	SF-500A
Capacity of screw (Pcs)	2000~2500	2000~3000	2000~4000	2000~4500
Feeding speed (Pcs/Min.)	55~60	45~60	35~50	30~45
Power supply	100~260ACV, 50/60Hz			
Dimension (Bowl dia. x H, mm)	550x300x430	570x320x430	600x350x430	650x400x430
Head diameter Max. (mm)	5	7	9	13
Total length Max. (mm)	8	10	20	30
Quantity of exit	1~2 (Design base on your actual requirement)			
Net weight (Kg)	15	18	19	21
Optional accessories	Placing table, Soundproof cover, Automatic screw supply machine			

# ENC Screw feeder (Vacuum suction & Strong magnet type)

Used as the screw feeder + Adjustable screw orbit + Scientific design + Wear-resisting Track + Used as screw feeder for automation equipment = Perfect function in your work



## Features:

- 1) Used as the screw feeder of automation equipment, more stable than vibration bowl.
- 2) The design of separating rail allows free adjustment, It can meet Screw M1.0~3.0mm.
- 3) The special design of the structure makes feeding fast and stable.
- 4) Can be controlled by PLC of automation equipment, Signal line is around the back.
- 5) The feeding and charging speed can be adjusted freely according to your requirement.
- 6) Our machine can meet both special 1:1 short screws and screws with washer.
- 7) Small overall dimension, occupying little space, and easy to move.

## Reference images:



ENC-1050T



ENC-1060T




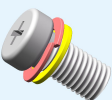
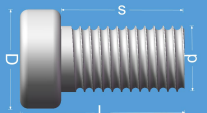


ENC-1050TC



ENC-1060TC

## Model and specification:

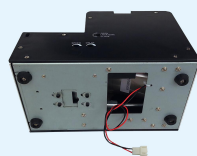
Item/Model		ENC-1050T	ENC-1060T	ENC-1050TC	ENC-1060TC
Applicable screw	Screw texture	Iron, nickel, cobalt etc.			
	Screw head type				
		1mm≤d≤5mm D≤8mm, s≤12mm, 3mm≤L≤15mm	1mm≤d≤6mm D≤10mm, s≤15mm, 3mm≤L≤20mm	1mm≤d≤5mm D≤8mm, s≤12mm, 3mm≤L≤15mm	1mm≤d≤6mm D≤10mm, s≤15mm, 3mm≤L≤20mm
Feeding efficiency (pcs/Sec.)		2			
Protection/Recovery/Function		Overload protection circuit, Reverse power polarity prevention circuit			
Signal output		√	√	√	√
Power supply		110~240ACV, 50/60Hz			
Capacity (Pcs)		500~2000	1000~5000	500~2000	1000~5000
Counting function		×	×	√	√
Overall dimension (mm)		180x125x140	235x165x180	180x125x140	235x165x180
Weight (kg)		2.5	4.8	2.5	4.8
Accessories		Operation manual, AC controller, Hexagon wrench			

## Application:

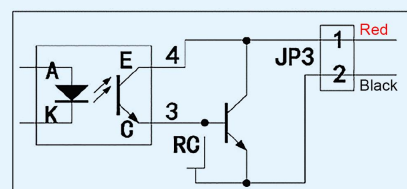


### NOTE:

- ① The "+" and "-" poles can't be connected inversely.
- ② Can't be connected to power directly.
- ③ Connect red wire and black wire to "+" and "-" pole of PLC.



Signal output terminal

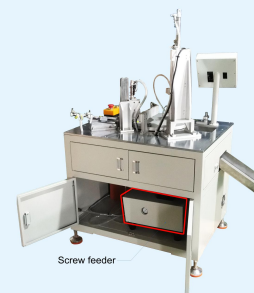
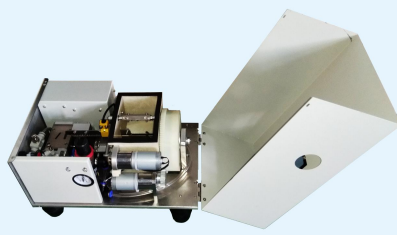


# ENC Screw feeder (Roller type)

Customized base on your screw and requirement = Perfect performance in your work

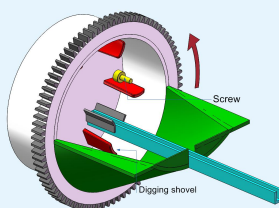
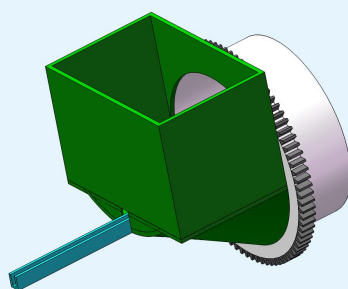


## Reference images:

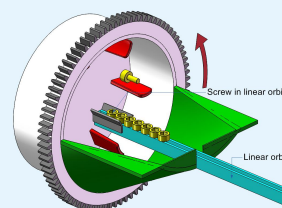


## Application:

## Screw roller introduction:



**NOTE:**The digging shovel rotates as the direction of red arrow,It will take some screws when passes through the bottom of hopper.



**NOTE:**The screws will fall into the linear orbit when they are taken at a certain height,This action will repeat time and again.

## Features:

- 1) Customized according to your actual requirement and screw size.
- 2) Compared with the vibration bowl type screw feeder,The noise it makes will be very less,So it can supply you a very quiet and comfortable working condition.
- 3) The special design of the structure makes feeding fast and stable.
- 4) Huge hopper can take a lot of screw,Reduce the times of placing screws much.
- 5) The screw feeding can be adjusted freely according to your requirement.
- 6) This machine is suitable the screws with washer or spring washer.
- 7) Small overall dimension,occupying little space,and easy to move.
- 8) One set screw feeder can feed screw for two tightening spindles of automation equipment.

## Optional accessories:

More colors optional.



## Technical matters to be confirmed before ordering:

- ① Your required capacity;
- ② Available space prepared for our screw feeder (Length x Width x Height);
- ③ Sample size;

## Specifications:

Item/Model	SF-200R	SF-300R	SF-400R	SF-500R
Capacity of screw (Pcs)	2000~2500	2000~3000	2000~4000	2000~4500
Feeding speed (Pcs/Min.)	55~60	45~60	35~50	30~45
Power supply	100~260ACV,50/60Hz			
Dimension (Bowl dia. x H,mm)	550x300x300	560x310x300	570x320x320	660x350x340
Head diameter Max. (mm)	5	7	9	13
Total length Max. (mm)	8	10	20	30
Quantity of exit	1~2 (Design base on your actual requirement)			
Weight (Kg)	15	18	19	21
Optional accessories	Placing table,Soundproof cover,Automatic screw supply machine			



## Reference images:



## Features:

- 1) Customized according to your actual requirement and screw size.
- 2) Huge capacity, It can take 2000~30000 pcs of screws, Reduce the times of pouring screws much.
- 3) The reasonable design and firm structure makes feeding fast and stable.
- 4) Matched with the CHU power controller, Make it possible to control the feeding speed, set the starting mode etc.
- 5) Soft PE coating can protect appearance of your screws or samples well to keep good quality.
- 6) It also can feed screws with washer or spring washer well.
- 7) Standard type is matched with one outlet, If required, We can match 2~8 outlets for you.

## Complimentary accessories:

## Optional accessories:

Power controller	Power cord (Output)	Power cord (Input)	Ring & pad	Correlation photoelectric	Proximity switch
					
SDVC20-S	3 Pins	3 Pins	3 sets	Installing	Installing

## Specifications:

Item/Model	VB-200	VB-300	VB-400	VB-500	VB-600	VB-D series
Capacity of screw (Pcs)	3000~8000	3000~7000	3000~7000	2500~6000	1000~3000	≥10000
Feeding speed (Pcs/Min.)	55~60	45~60	35~50	30~45	30~40	20~30
Power supply	100~260ACV, 50/60Hz					
Dimension (Bowl dia. x H, mm)	200x300	300x320	400x360	500x420	600x500	Customization
Head diameter Max. (mm)	5	7	9	13	20	40
Total length Max. (mm)	8	10	20	30	50	100
Quantity of exit	1~12 (Design base on your actual requirement)					
Weight (Kg)	18	22	24	26	35	Customization
Complimentary accessories	Power controller, Power cord (Output), Power cord (Input), Fixing foot ring & Foot pad x 3					
Optional accessories	Correlation photoelectric, Proximity switch, Automatic screw supplying machine					

## Technical matters to be confirmed before ordering:

- ① Your required capacity;
- ② Available space prepared for our vibration bowl (Length x Width x Height);
- ③ Direction of exit (Clockwise or Anticlockwise exit, Please check the "Reference images" above);
- ④ Requirement of screw appearance protection;
- ⑤ Exit quantity, Interval between two exits, Exit height;
- ⑥ Sample size;
- ⑦ Requirement of sound insulation;